



9th European Deaf Orienteering Championships

BULLETIN 1



3rd-8th September 2021

VILNIUS
Lithuania



WELCOME !

Lithuanian deaf sports committee with the host club OK Perkūnas are glad to invite you to the 9th European Deaf Orienteering Championship(EDOC) which will take place on the 3rd-8th September 2021 in Vilnius, Lithuania. From fast city streets, to technical forests - we will do our best to provide high quality, challenging and fair competition for the athletes. Looking forward to seeing you all in our beloved capital city! More information about capital of Lithuania is in website <https://www.whereisvilnius.com/>.



1. Organisation

- 1.1. Organisation Committee (LDSC - Marius Minkevičius)
- 1.2. Technical Committee (EDSO - Oleg Lavryk, LOSF/OK Perkūnas - Vytautas Ralys)
- 1.3. Event controllers (IOF - Gytis Šumskas (Event Adviser), EDSO - Oleg Lavryk (EDSO orienteering TD))

2. Contacts

OC representative: Marius Minkevičius

Email: lksksportas@gmail.com

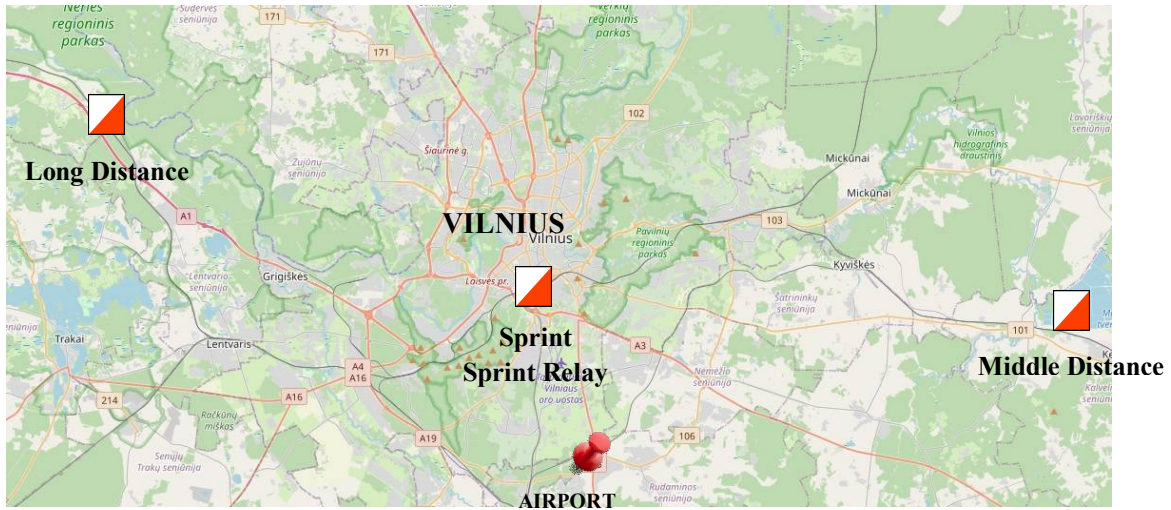
3. Program

Thursday, 2 September	Arrival
Friday, 3 September	Model sprint
Saturday, 4 September	Individual Sprint distance
Sunday, 5 September	Sprint Mix Relay
Monday, 6 September	Rest day, model forest
Tuesday, 7 September	Middle distance
Wednesday, 8 September	Long Distance
Thursday, 9 September	Departure



4. Venues and Embargoed Areas Information

The competition will take place in the Lithuanian capital Vilnius and in the forests 20-25 km from Vilnius.



According to the IOF Competition rules (§ 26.5), embargoed areas are forbidden for all potential EDOC 2021 athletes, team officials and other persons, who, through knowledge of the terrain, may influence the results of the competitions. All embargoed areas are "strict embargo". **Interactive map of embargoed areas -**

> <https://www.google.com/maps/d/viewer?mid=1uYAvG4xlDgUfzIPNBfaRFGSIXqjx2yRu&ll=54.75152492162281%2C25.152607357689806&z=10>

4th September, Individual Sprint race

Map: Gediminas Avenue



Map scale:

1 : 4000, H – 2 m

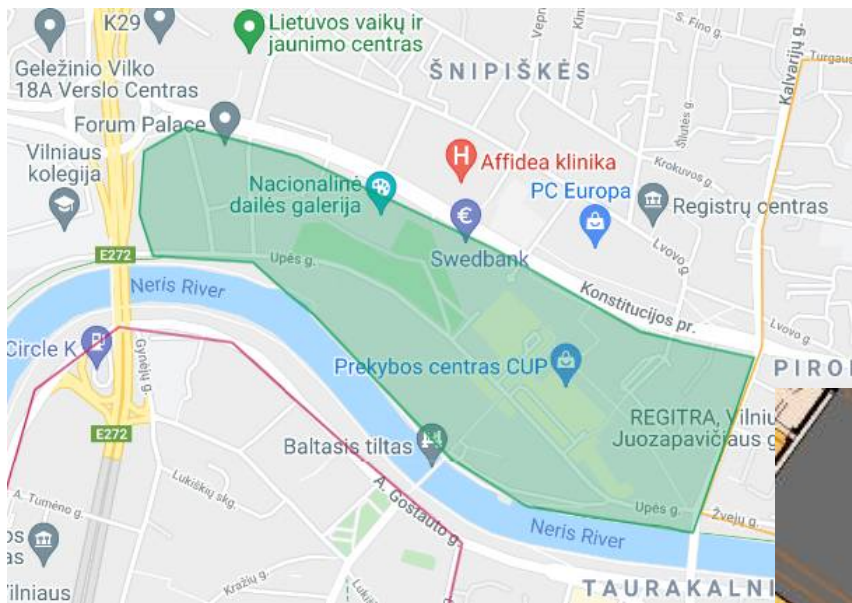
Area first mapped 2021



Terrain: flat old town area with a mix of soviet architecture makes location great for very fast sprint courses.



5th September, Sprint Mix Relay
Map: The White Bridge



Map scale
1: 4000, H – 2.5 m

Area first mapped 2017,
renewed - 2021



Terrain: Old meets the new.

A unique mix of 19th century, soviet and modern architecture. Considerable amount of open areas.

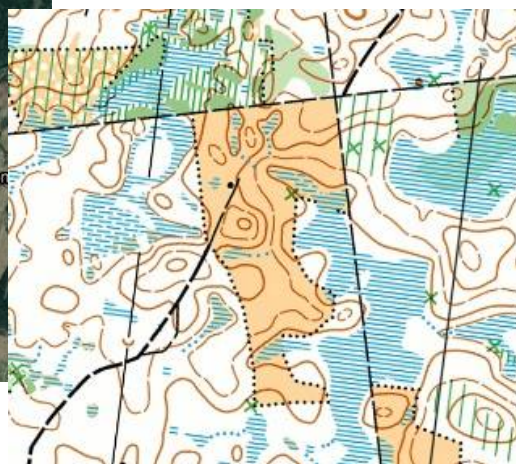
Height difference between low and high points 15 meters.

7th September, Middle distance
Map: Mickūnai forrest



Map scale
1 : 10 000, H-2.5

Area first mapped 2019,
renewed - 2021



Terrain: Mostly pine tree forrest with a lot of small marshes. Good runnability and visibility, with some forest clearings and and smaller areas of dense forest.

Precise orienteering and high running speed required to show a good result.



8th September, long distance

Map: Šilėnai



Map scale

1 : 15 000, H - 5 m

Renewed - 2021

Sample



Terrain: Mostly medium runnability and visibility forest, lower density path network and significant land forms (slopes up to 50 m), makes it perfect for long distance race.

***Model**

Sprint model (3rd September) and forrest model (6th September) will be available. Venues will be specified later with upcoming information.

5. Punching system

SPORTIdent AIR+ punching system will be used. SIAC cards can be rented for 5 EURO (all days)

6. Weather and climate

Mild and pleasant weather (~15°C) should be expected for the beginning of September. However quite hot (+25°C) or cool and rainy (+5/+10°C) days are possible.

7. Clothing

Road running or light trail shoes recommended for sprint distances, orienteering shoes and outfit for forrest disciplines. Spiked shoes are allowed.



8. Event centre

Lithuanian deaf association, Sv.Kazimiero str. 3, Vilnius
Team accreditation and team officials meeting will be held at the Event Centre.

9. Entries

Preliminary entry - until 03 April 2021
Final entry - until 03 July 2021
Name registration - until 03 August 2021
Hotel reservation form - until 01 July 2021
Arrival and departure form - until 01 August 2021

10. Entry fees and payment

Friendship through sport! Single type of accommodation, single fee for each competitor.
Entry package is 675 Eur/participant.

Entry fee includes:

Accommodation in „Comfort Hotel LT Rock'n'Roll Vilnius“ (<https://comforthotel.lt/>)

Between 02 - 09 September

Full board from dinner on 02 September to breakfast on 09 September

Start fee for all four EDOC competitions

Model Events

Local transport and transport from/to Vilnius airport, train station, bus station.

Friendship party

Payment information:

Bank: SEB bankas

IBAN: LT30 7044090101962222

SWIFT: CBVI LT 2X

Owner of the account: Lithuanian deaf sport committee

30 % of entry fees must be paid via Bank transfer until 01 July 2021.

11. Accreditation

Official accreditation will be on 02 September from 15.00 to 19.00 o'clock and on 03 September from 9.00 to 12.00 o'clock at the event centre.



12. Competition rules

Competitions will be conducted in accordance with the technical regulation of EDOC 2021 and valid competition rules of International orienteering federation (IOF).

13. Anti-doping

All participants will follow valid WADA (World Anti-Doping Agency) regulations, ICSD (International Committee of Sport for the Deaf) Anti-Doping regulations and the International Orienteering Federation Anti-Doping Rules.

14. Health services

The Event Organizer will coordinate healthcare service for participants and will provide first-aid at each competition area. The Event Organizer will not bear any responsibility related to the cost of medical services of the participants. Each Federation is responsible for the health insurance of all their delegates.

15. Visa

Please check the following link with a list of countries whose citizens require a visa to enter Lithuania/Schengen Zone:

<https://www.renkuosilietuva.lt/en/visas/>

16. Media

All information of EDOC will be on website www.edoc2021.com. An official EDOC 2021 Facebook - page will also be released. More information you can find in Facebook group „World Deaf Orienteering“.

17. PCR tests, conditions of participation

We know that the current situation concerning COVID-19 disease is quite uncertain and unpredictable. If there are any special measures in place, we will adapt to them and kindly ask all the participants and spectators to follow them. Full details of PCR tests and conditions of participation for Covid-19 will be provided in Bulletin 2.